

# GILBERT & SULLIVAN

SEPTEMBER 2002 NEWSLETTER

SOCIETY OF AUSTIN

## September Musicale

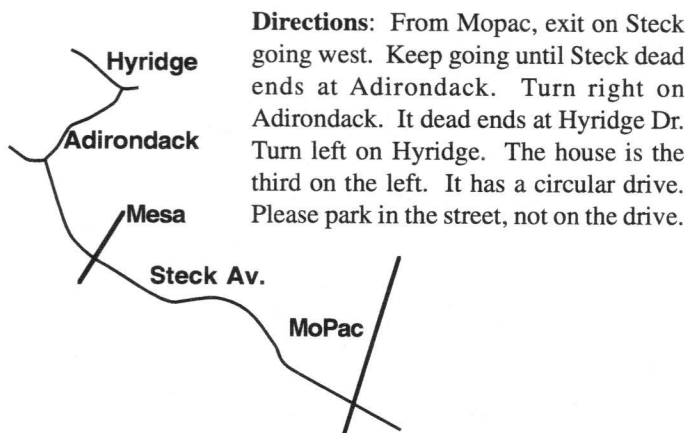
Monday, September 9, 2002, 7:30 pm

4305 Hyridge Dr.  
Austin, Texas 78759  
343-8408

### Refreshments will be provided

Come one, come all for a delightful program of ensemble works planned by Libby Weed

We thank Brad Merrell and his parents Benny and Nancy Jay for inviting us to open our season in their lovely home.



**Directions:** From Mopac, exit on Steck going west. Keep going until Steck dead ends at Adirondack. Turn right on Adirondack. It dead ends at Hyridge Dr. Turn left on Hyridge. The house is the third on the left. It has a circular drive. Please park in the street, not on the drive.

## Coming Events

Austin Circle of Theaters (ACOT) B. Iden Payne Awards on Monday September 30 at the State Theater.

*The Grand Duke* in concert form, Monday November 4 and Friday November 8, at Westminster Manor (see announcement on page 2).

## Help Us Sell Ads

Look around at the places where you do business. Would any of them be willing to place a business card-sized ad in this Newsletter? (This announcement is that size, in a space 2" x 3.5".) We will place up to four such ads per issue, at the introductory charge of \$20 per ad. Call our office at 472-4772, or send an e-mail to

info@gilbertsullivan.org.

## Here's a how-de-do! Here's a state of things!

Our Gilbert & Sullivan Society is facing some severe problems. They boil down to two:

- 1) Who will do the work? and
- 2) How will we raise the money we need?

The Board has made some significant decisions. We will cut back the Musicales to four this year, each with its own special theme. We hope to attract a wider audience with this format. The monthly Executive Board meetings will continue to handle the Society business. To provide the monthly membership meetings mandated by the By-Laws, the members will be invited to attend a short business meeting at 8 pm following Executive Board meetings. [See the back page for the Season Schedule.]

We have formed several committees to work on various problems, but we need all the help we can get from the members. If you would like to

- work on a committee, or
- plan an additional Musicale, or
- tell us your interesting ideas,

please let us hear from you. Call Larry Shepley (327-1511), Reba Gillman (327-2277), other Board Members (phone numbers on back page), or leave a message at the office (472-4772).

### Committees

**Fund Raising:** Arthur DiBianca, Chair; members Charles Antonie, Larry Shepley, and Libby Weed.

**Musicale Venues:** Paula Tyler, Chair; members Chris Buggé and Brad Merrell.

**By-Laws Revision:** Sue Caldwell, Chair; members Arthur DiBianca and Reba Gillman

Reba Gillman, Secretary



## Randalls/Tom Thumb Good Neighbor Program

Please register your Randall's Remarkable Card — Randalls will donate 1% of your bill to us (and up to two other charitable groups, if you wish). To register, visit the customer counter and use our name and number:

**Gilbert and Sullivan Society**

**10090**

This is an easy and cost-free (to you!) way to help us out.

## Message from Your President

• Larry Shepley

**Trial by Jury ... And More** was a lot of work, and I was, in effect, the Producer. As you may know, my background is physics, and so producing is to me a learning experience — one which teaches me that mistakes can be educational. One mistake I made was to schedule the show for only one weekend. I'm sorry if you couldn't make this production, for it was delightful and fun. Thanks to G'ann Boyd, Jeffrey Jones-Ragona, Cheryl Borden, and Art DiBianca, we presented an evening of scenes and songs followed by the first G&S hit, that was a great evening's entertainment. The video of the show is now available (see the ad on the next page), and I recommend it.

For the first time in several years we did not have a real theater person supervising the production. Although I enjoyed this experience, I feel that a new President should be elected to help supervise our production of *The Pirates of Penzance* next summer. Accordingly, I will step down as President at the end of my term, though I will certainly continue to help The Society after my successor takes over next January.

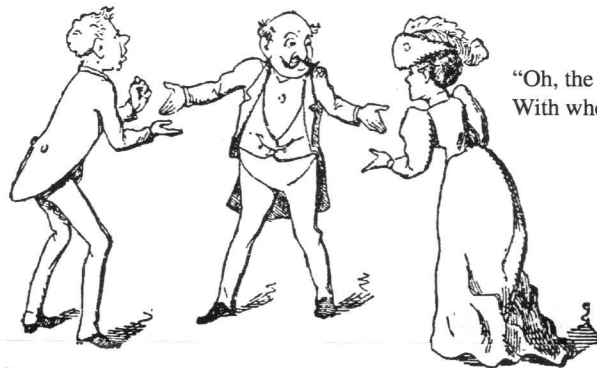
Now it is time to look to the future. The Society, feeling the crunch of the times, will be cutting back in expenses while planning for a block-buster *Pirates of Penzance* next summer. We plan to present this popular piece starting in mid-June at the Helm Theater of St. Stephen's School. We also will be bringing back

Rafe MacPhail as Stage Director, so expect to see what will be one of Austin's best G&S shows ever.

I've just returned from Ontario, where my nephew Anton Piatigorsky's play *Eternal Hydra* was produced by the Stratford Theater Festival. On the way back I stopped off to visit Rafe in Bridgewater, Virginia. He is full of enthusiasm about *Pirates* and even gave me a list of costumes for the show. Although he has a nice poster from the Joseph Papp production on Broadway a few years ago, he emphasized that he will be staging *Pirates* in the traditional manner, one which is sure to demonstrate that Gilbert and Sullivan knew what they were doing! He and Alice say hello, and I hope you-all will join me in welcoming them back to Austin — and congratulations to his son Alexander on his upcoming marriage!

Congratulations, too, to Leslie Salas and Faith DeBow on their presentation of Songs of Our Grandmothers at the Gaslight Theater in Lockhart last July. They presented a slightly longer version than the show they gave us at our April Musicale, including memorabilia — photos of the original song covers. I wish them good luck as they continue with their production.

I also wish to thank the Austin Arts Commission for recommending that we receive funding from the City Arts fund and from state resources for next year (in support of *Pirates*). With this "seed" money, I hope that we will develop the support we so richly deserve from corporations, foundations, and individuals. You-all help, now!



"Oh, the man who can drive a theatrical team,  
With wheelers and leaders in order supreme."  
*The Grand Duke*

"Then you've got to the state which is known  
To the medical world as 'jim-jams'."  
*The Grand Duke*



## The Grand Duke

Another first for the G&S Society: The last opera by Gilbert & Sullivan. The miserly Grand Duke of Pfennig Halbpennig is being plotted against by a troupe of actors. The action includes a duel by drawing cards — the loser is declared dead, but the winner must take over both the assets and the obligations of the loser. If the loser is engaged to be married ....

The plot is being condensed by Art DiBianca and Brad Merrell. It will be presented in concert form twice, Monday November 4 and Friday November 8, at Westminster Manor.

Would you like to participate? We have room for everyone! If you play an instrument or sing or want to help with costumes (which will be minimal — and no sets), fine.

Please come to the first rehearsal at Gary Hallock's, 1304 East Applegate (phone 973-9929 or call Larry Shepley at 327-1511 for directions) Saturday September 14 at 1:00 pm. And no, I don't know what a soubrette is.

The cast list includes:

**Rudolph** (*Grand Duke of Pfennig Halbpennig*) Patter Baritone  
**Ernest Dummkopf** (*a Theatrical Manager*) Tenor  
**Ludwig** (*his Leading Comedian*) Patter Baritone  
**Dr. Tannhäuser** (*a Notary*) High Baritone  
**The Prince of Monte Carlo** Baritone  
**Herald** Baritone  
**The Baroness von Krakenfeldt** (*betrothed to Rudolph*)  
 Mezzo-Soprano  
**Julia Jellicoe** (*an English Comédienne*) High Soprano  
**Lisa** (*a Soubrette*) Medium Soprano  
**Chorus** of Chamberlains, Nobles, Actors, Actresses, Etc.

## News of Members

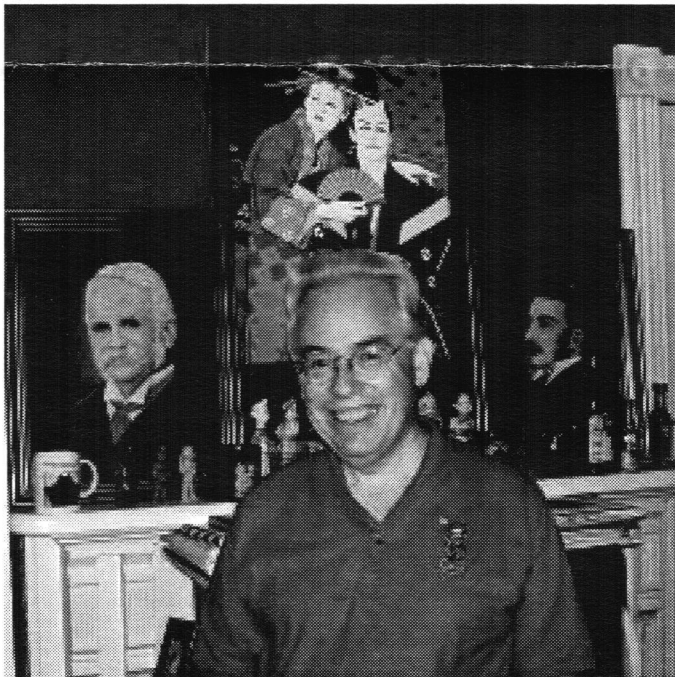
**Len and Reba Gillman** enjoyed two visits with **Rafe** and **Alice MacPhail** in July in Connecticut. On the first occasion they attended a performance of the **Looking In** teenaged group, directed by their son **Jonathan**. The performance was exciting, and so was the drive through Hartford to get there, with Rafe at the wheel. The following week they visited the Incarnation Center, where the second ElderHostel session was in progress. They enjoyed meeting **Betty** and **Harry Benford** (of the **Lexicon**) and having lunch together at the Center. They say it was great to see old friends, but they must report that **Rafe** has shaved off his signature mustache.

**Rafe's** son **Alexander MacPhail** graduated from seminary and was ordained to the Episcopal Diaconate in June 2002. He

will be ordained as an Episcopal priest on December 16, 2002. He is presently serving as a pale, young Curate at Aquia Church in Stafford, Virginia. He will marry **Karin Chambers** on May 24, 2003. The Japanese equivalent for Hear, Hear, Hear!

## Next Board Meeting

The September meeting of the Executive Board will be at 7:00 pm, Tuesday, September 3, at Paula Tyler's, 4400 Balcones Drive. You are invited!



Rafe MacPhail in his home in Bridgewater Photo by Larry Shepley

The  
**Gilbert & Sullivan  
Society of Austin**



**Trial by Jury**  
...And More

**Video now available. Only \$20**  
(or \$22 if you wish it mailed.)  
Call or write for yours!

## G&S Mugs

Tastefully designed with the G&S Logo. Only \$10. Call our office or write us for one of these handsome mugs (lead-free and microwave and dishwasher safe).



## Membership Form

We encourage you to join our Society. If you are a member, please check your membership renewal date on the top of the mailing label. If expired or near expiration, your membership needs to be updated! To correct your address, renew your membership, or become a member, complete this form, and mail it to us at:

The Gilbert & Sullivan Society of Austin  
P.O. Box 684542  
Austin, Texas 78768-4542 Phone: 472-4772 (472-GSSA)

Name (as you want it to appear) \_\_\_\_\_  
Phone (Day) \_\_\_\_\_ (Night) \_\_\_\_\_  
Address \_\_\_\_\_  
City, State, ZIP \_\_\_\_\_  
E-mail address \_\_\_\_\_  
What company do you work for? \_\_\_\_\_

Please check membership category:

- ☐ Individual: \$20  
☐ Family/Group: \$30  
☐ Youth (18 & under): \$10  
☐ Senior (65 & over): \$10
- Membership benefits include our Newsletter & 10% discount on tickets.
- ☐ My donation of \_\_\_\_\_ is enclosed.  
(For levels & privileges, see below.)
- ☐ I'm interested in becoming a business sponsor. Please call me.
- ☐ I'm interested in volunteering.

Please consider contributing to The Society at one of the following **Donor Levels**: **Patron** (\$50-\$99), **Grand Duke or Duchess** (\$100-\$249); **Major General** (\$250-\$499); **Pooh-Bah** (\$500-\$999); **Pirate King** (\$1000-\$2499); **Savoyard** (\$2500 & up). Donors receive various benefits, including membership, listing in programs, and other benefits. Please call our office for further information.

## The Gilbert & Sullivan Society of Austin

Since 1976, we have been spreading the joys of  
Gilbert & Sullivan through

**Annual Grand Productions**

**School Outreach Concerts**

**Free Monthly Musicales**

**Musical Scholarships**

**Monthly Newsletters**

**Holiday Season Shows**

G&S Office

4604 Burnet Road, Austin, TX 78756

P.O. Box 684542, Austin, TX 78768-4542

(512) 472-4772 [472-GSSA]

### Executive Board

President	Larry Shepley	327-1511
Executive Vice-President	Libby Weed	837-5441
Production Vice-President	Sue Ricket Caldwell	343-7700
Publicity Vice-President	Charles Antonie	733-1006
Secretary	Reba Gillman	327-2277
Treasurer	Dave Wieckowski	391-8400
Historian & Parliamentarian	Jean Smootz	259-2373
Director at Large	Paula Tyler	459-4639
Director at Large	Chris Buggé	345-9551
Director at Large	Arthur DiBianca	707-2809

Newsletter Editor

Reba Gillman

Layout

Larry Shepley

Our web site: [www.gilbertsullivan.org](http://www.gilbertsullivan.org)

E-mail: [info@gilbertsullivan.org](mailto:info@gilbertsullivan.org)

The Society holds non-profit status under 501(c)(3) of the IRS code.

## G&S Society Season Schedule for 2002-2003

### Musicales

**Monday September 9, 2002, 7:30 pm**

Recital and Social Hour

**November 4 and 8, 2002**

*The Grand Duke* in Concert — Westminster Manor

**Monday January 6, 2003, 7:30 pm**

Annual Meeting and Some Music

**March, 2003**

G&S Gems with Rafe MacPhail

### Monthly Executive Board Meetings

followed by Membership Meetings

Dates to be announced

### Fundraising Gala

February 2003

### *The Pirates of Penzance*

Helm Theater, St. Stephen's School

June, 2003

THE  
**GILBERT  
&  
SULLIVAN**  
SOCIETY OF AUSTIN  
P.O. Box 684542  
AUSTIN, TEXAS 78768-4542  
RETURN SERVICE REQUESTED

NON-PROFIT  
ORGANIZATION  
US POSTAGE PAID  
PERMIT NO. 2054  
AUSTIN, TEXAS

