

GILBERT & SULLIVAN

JANUARY 2002 NEWSLETTER

SOCIETY OF AUSTIN

• Next Meeting •

January Annual Business Meeting and Musicale

Monday January 7, 2002, at 7:30 pm
At Paula Tyler's: 4400 Balcones Drive;
459-4639

• Please bring Munchies •

Important Business: Election of Officers
See the Proposed Slate below

There will also be a short musical program.

Looking Ahead • Save the Dates
Monday February 4, 2002, at 7:30 pm
Our February Musicale
Monday March 4, 2002, at 7:30 pm
The Do-It-Yourself *Princess Ida*

Looking ahead!

OUR GRAND & GLORIOUS GALA FUNDRAISER & LAVISH CHAMPAGNE BUFFET

Saturday January 12, 2002
at 8:00 pm

Sanctuary of the Unitarian Church
3700 Grover Street

Directors: Frank Delvy & Jeffrey Jones-Ragona

Look for our invitation in the mail, and please become
a sponsor. Or call AusTix, at 454-TIXS (454-8497)

General Admission: \$30 in advance or \$35 at the door.

Message from Your President

• Larry Shepley

Happy Holidays! Have a peaceful, prosperous New Year!

I want to thank the Nominating Committee for their fine work. It consisted of Bill Hatcher, Chairman, Allan Longacre, and Theresa Wilson.

In 2002, the Society will have several ambitious projects. First is our Gala, which is always a winter highlight in Austin. Frank Delvy and Jeffrey Jones-Ragona are putting together a review of our last several shows, and it promises to be a real treat. Of course we will have a lavish buffet, complete with champagne, and I hope you all will come. Please consider being a special sponsor for this fundraiser.

Our next project will be a do-it-yourself Princess Ida, the one major G&S opera we have never presented, on March 4. Directed by Arthur DiBianca, Gary Hallock, and Derek Smootz, it will star: YOU. We want as many people to participate as possible, soloists, chorus, instrumentalists, or even spectators.

Led by Rafe MacPhail and Jeffrey Jones-Ragona, our production next summer of *The Pirates of Penzance* will be one of the major events of the year. Again, I hope that many of our members will participate, as singers, crew, and in that all-important category, audience.

I recently visited Rafe and Alice MacPhail at their home in Bridgewater, Virginia, a block away from the campus of Bridgewater College, where Rafe teaches. The College itself has a high reputation and some peculiar attractions, including one of the most interesting museums I've ever seen. The Reuel B. Pritchett Museum is filled with items given to the College over the years by various benefactors, and I can only describe the collection as fascinating. The centerpiece is the Venice Bible, published in 1482. The high point of my visit, though, was Rafe's collection of G&S memorabilia. I have heard him speak of it and knew it was extensive, but I was floored by the vastness and quality of the material Rafe has amassed. Be nice to Rafe; perhaps he will invite you over; and if he does, accept!

Proposed Slate of Officers

From the Nominating Committee (Bill Hatcher, Chairman, Allan Longacre, and Theresa Wilson):

- President, Larry Shepley
- Executive Vice-President, Libby Weed
- Production Vice-President, Sue Rickett Caldwell
- Publicity Vice-President, Charles Antonie
- Secretary, Reba Gillman
- Treasurer, Dave Wieckowski
- Historian & Parliamentarian, Jean Smootz

CG 6110

Last Musicale

Reba Gillman • Secretary

A small but enthusiastic group gathered at Paula Tyler's on Monday December 3, 2001 to enjoy the performance of fellow artists from San Antonio and San Marcos. Present were 20 members and guests: Reba Gillman, Sandra Grimes, Enid Hallock, Gary Hallock, Robert Hallock, Allen Lawshae & JoAnn Reeves, Robert Mellin, Bee Harris Polomé, Mary Roche, Jeff & Kathy Rothmeier, Martha Schumacher & Errol Olson, Larry Shepley, Paula Tyler, Libby Weed, and Theresa Wilson, and Eileen Salas and Simone Korn, plus the four performers, Faith DeBow at the piano, and singers Kathy Feinstein, Joe Libby, and Leslie Salas. Missing were several regulars who had other commitments either social or medical, and Lucy Shoe Meritt, who had been asked to support her neighborhood at a zoning hearing.

After two brief announcements (reported elsewhere in this Newsletter), President Larry Shepley introduced our guest performers and turned the proceedings over to them. Baritone Joe Libby said the San Antonio G&Sers at present had no organization and no officers, but one of his colleagues announced that he was definitely The Ring Leader. In an effort to revive the group several performers had put on in October a well received revue entitled "Precious Nonsense," and what followed were some of the numbers in that revue.

They began with "Brightly dawns our wedding day," the Madrigal from *The Mikado*, with Leslie Salas singing soprano, Kathy Feinstein singing mezzo, and Joe Libby singing baritone. Kathy sang "When maiden loves," with which Phoebe opens *The Yeomen of the Guard*. Next came "The criminal cried as he dropped him down," the trio from *The Mikado*, which describes the alleged execution of Nanki Poo. Leslie sang the part of Pooh Bah, since the original performer had not been able to come to our Musicale. Joe Libby then gave us a very well enunciated King Gama's "If you give me your attention," from *Princess Ida* (we're really going to know that song!) followed by an updated version of the little list in "As someday it may happen" from *The Mikado*. Joe explained that they thought they could get away with this since W.S. Gilbert wasn't around to complain. Joe finished off this section singing "The Nightmare Song" from *Iolanthe*, again spitting out every word and demonstrating that he is the Frank Delvy of San Antonio.

Leslie sang Josephine's dramatic aria "The hours creep on apace," from *Pinafore*. Joe and Kathy gave us a restrained but well-defined "I once was a very abandoned person," from *Ruddigore*, complete with "one of their blameless dances." And Kathy confessed Ruth's error, singing "When Frederic was a little lad," from *Pirates*. To finish off, the talented trio sang a rousing Medley of the Sea, switching seamlessly from "We sail the ocean blue" (*Pinafore*) to "I shipped d'ye see" (*Ruddigore*), to "I am a Pirate King" (*Pirates*) back to "I am the monarch of the sea" (*Pinafore*) several times.

Leslie's five-year-old daughter, Eileen, has been bitten by the performing bug (just wait 10 or 15 years!) and sang for us "Jesus loves the little children." We all muddled through the Pirate King intro and rose to sing a rousing "Hail Poetry!" (*Pirates*), followed by "Now to the banquet we press," (*Sorcerer*), before proceeding to our delicious snacks and conversation. Thank you Paula! we certainly feel at home in your house.



From 1989: Michael Drousche, Jan Jones, Frank Delvy in *H.M.S. Pinafore*.

Look for our History, filled with vintage photographs and interesting commentary, authored by Leland Smith.

Mabel:

If such poor love as mine
Can help thee find
True peace of mind —
Why, take it, it is thine!

The Pirates of Penzance



The Sorcerer

In Bryan, Texas, in January 2002

The Sorcerer will be performed in Bryan, Texas, on January 10 – 12, 2002, by the 7th through 12th grade students of St. Michael's Academy. This is the 23rd consecutive year that St. Michael's Academy has put on a Gilbert and Sullivan operetta. It will be at the Rudder Forum Theater on the Texas A & M Campus. The performance on Thursday, January 10 is a Gala at \$25 a ticket with snacks at the interval. Other performances are \$8.00. For information call St. Michael's Academy at 979-822-2715.

The Sorcerer, Again

In Shreveport, Louisiana, in March 2002

More information later

This will be an adult production. One of our members, Stanton Taylor, is in charge of this performing G&S group. He comes regularly to see our productions, and also participated in the Connecticut G&S EldcrHostel run by Rafe MacPhail in July 2000.

Tribute to Jess Walters

Reported by Reba Gillman

This long delayed event took place on Jess's Birthday, November 18, 2001, at the One World Theatre from 5 to 8 pm. Jess's son, Emil Wolk, an award-winning British actor and director, came from England to share his recollections of Jess's years in Europe. Using photographs and recordings, he described those events filled with drama, humor, and sometimes tension, and the huge impact Jess had on Emil's life. It was a delightful glimpse of Jess and Emma before we knew them — when they were young and very handsome.

Emil thanked the people of Austin for making Jess's years here among the happiest and most rewarding of his long career. I know that The Gilbert & Sullivan Society of Austin loved Jess, and that he loved us.



Season's Greetings

Have been received from member, and former Austinite Marjorie Saad, who now lives in Virginia Beach, VA. She attended a performance of *The Mikado* put on by the Virginia Opera (in Norfolk, I believe), but reports "our group in Austin is better!!" Thank you, Margie!!

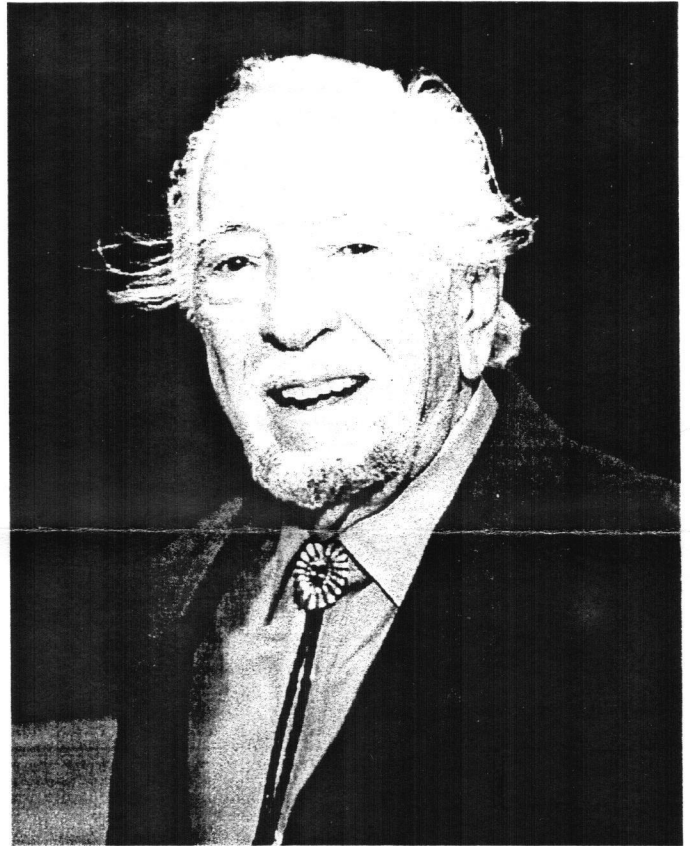


Plan a Musicale

Bring your interests and talents to the monthly gathering. find ways to involve the audience. Plan a sing-a-long. Depart from the beaten track; invite new performers. Give a talk about something you know.

Volunteer!

We can suggest accompanists, etc.



Judge: Yes, I am a Judge.

All: And a good Judge too!

Judge: Though homeward as you trudge,
You declare my law is fudge,
Yet of beauty I'm a judge.

All: And a good Judge Too!

Trial by Jury

Membership Form

We encourage you to join our Society. If you are a member, please check your membership renewal date on the top of the mailing label. If expired or near expiration, your membership needs to be updated! To correct your address, renew your membership, or become a member, complete this form, and mail it to us at:

The Gilbert & Sullivan Society of Austin
P.O. Box 684542
Austin, Texas 78768-4542 Phone: 472-4772 (472-GSSA)

Name (as you want it to appear) _____

Phone (Day) _____ (Night) _____

Address _____

City, State, ZIP _____

E-mail address _____

What company do you work for? _____

Please check membership category:

☐ Individual: \$20

☐ Family/Group: \$30

☐ Youth (18 & under): \$10

☐ Senior (65 & over): \$10

Membership benefits include our Newsletter & 10% discount on tickets.

☐ My donation of _____ is enclosed.
(For levels & privileges, see below.)

☐ I'm interested in becoming a business sponsor. Please call me.

☐ I'm interested in volunteering.

Please consider contributing to The Society at one of the following **Donor Levels**: **Patron** (\$50-\$99), **Grand Duke or Duchess** (\$100-\$249); **Major General** (\$250-\$499); **Pooh-Bah** (\$500-\$999); **Pirate King** (\$1000-\$2499); **Savoyard** (\$2500 & up). Donors receive various benefits, including membership, listing in programs, and other benefits. Please call our office for further information.

The Gilbert & Sullivan Society of Austin

Since 1976, we have been spreading the joys of
Gilbert & Sullivan through

Annual Grand Productions

School Outreach Concerts

Free Monthly Musicales

Musical Scholarships

Monthly Newsletters

Holiday Season Shows

G&S Office

4604 Burnet Road, Austin, TX 78756

P.O. Box 684542, Austin, TX 78768-4542

(512) 472-4772 [472-GSSA]

Executive Board

President	Larry Shepley	327-1511
Executive Vice-President	Libby Weed	837-5441
Production Vice-President	Sue Ricket Caldwell	343-7700
Publicity Vice-President	Lucian Chimene	328-4810
Secretary	Reba Gillman	327-2277
Treasurer	Dave Wieckowski	391-8400
Historian & Parliamentarian	Leland Smith	327-6813
Director at Large	Paula Tyler	459-4639
Director at Large	Chris Buggé	345-9551
Director at Large	Frank Delvy	451-3710

Newsletter Editor

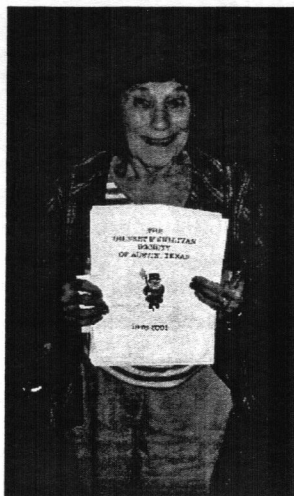
Reba Gillman

Layout

Larry Shepley

Our web site: www.gilbertsullivan.org

E-mail: info@gilbertsullivan.org



Reba Gillman



THE
**GILBERT
&
SULLIVAN**
SOCIETY OF AUSTIN
P.O. BOX 684542
AUSTIN, TEXAS 78768-4542
RETURN SERVICE REQUESTED

NON-PROFIT
ORGANIZATION
US POSTAGE PAID
PERMIT NO. 2054
AUSTIN, TEXAS

TOP LINE OF MAILING LABEL IS DATE WHEN YOUR MEMBERSHIP EXPIRES.

