

THE
GILBERT & SULLIVAN
SOCIETY OF AUSTIN

FEBRUARY 1998 NEWSLETTER

Next Meeting - Our Monthly Musicale

Monday - February 2, 1998 at 7:30 at Pearl Amster's,
2304 Hartford Road, 472-7028.

Larry Shepley and Bill Hatcher are planning the program with **Lord High Pianist Bob Wall** at the piano.

Come join the fun! Please bring munchies. We'll be singing choruses from *The Mikado* so bring a score if you have one.

Coming Events - Save the dates!

Monthly Musicales

March 2nd, April 6th, May 4th, and June 1st, 1998

The Mikado

Opening Thursday June 11, and running Thursdays, Fridays, Saturdays and Sundays through June 21, 1998

The Mikado Texas Style

Many thanks to a member who sent in this choice bit. In 1888 a pirated version of the Mikado appeared in Texas. Yum-Yum sang:

The sun, whose rays
Are all ablaze
With ever-living glory,
Shines brightly forth
On all Fort Worth,
And makes things hunky-dori!

And in the finale these words rang out:

For he's going to stay in Fort Wort --Fort Worth,
Now pocket your malice
And slip off to Dallas,
Or come and partake of our mirth--mirth--mirth,
And join our expressions of glee.

Executive Director Needed

We are still looking for that just right person to be our next Executive Director. Knowledge and appreciation of Gilbert and Sullivan are helpful. The duties of this part-time job include producing the annual grand show, the All-Star Holiday Revue Gala fundraiser, the In-School programs, and overseeing the office and activities of the organization.

Send resumes to President Libby Weed, The Gilbert & Sullivan Society of Austin, 11822 Eubank Drive, Austin TX 78758, or to the G&S Society, 2026 Guadalupe, Suite 309, Austin TX 78705. For information call Libby at 837-5441, or the Society Office at 472-4772.

We really need to fill this position Sooon!

URGENT

Frequent Flyer Miles needed to bring Ralph MacPhail, our *Mikado* director, from Virginia to Texas. Three round-trips will be needed in all.

Please make contributions in increments of 30,000 miles. Call the Gilbert & Sullivan office at 472-4772.

MANY THANKS!

LG
6/10

Last Musicale and Annual Meeting

Reba Gillman • Secretary

Officers Elected for 1998

President	Libby Weed
Executive V.P.	Bill Hatcher
Production V.P.	Chris Buggé
Publicity V.P.	Robert Mellin
Secretary	Reba Gillman
Treasurer	Edward Kluth
Historian-Parliamentarian	Larry Shepley

There were 33 eager participants at our gathering on Monday January 5, 1998 at Pearl Amster's. Present were members Pearl Amster, Byron Arnason, Chris Buggé, Lucian Chimene, Frank & Donna Delvy, Reba Gillman, Loel Graber, Russell and Kay Gregory, Bill Hatcher & daughter Lauren, Cathy Jackson, Allen Lawshae, John Mast, Nancy McQueen, Robert Mellin, Lucy Shoe Meritt, Maurie Ommerman, Lord High Physician Dr. Blair Protzman & Joyce, Andrée Sjoberg, Leland L. Smith, Lord High Pianist Bob Wall, Jess & Emma Walters, Libby Weed, Benné Willerman with her friends Iris & Shirley Koeller, and Theresa Wilson, and guests Jeannette Lay and Jamie Walker.

Frank Delvy led us all in singing the opening chorus from *Pinafore*, "We sail the ocean blue". President Libby Weed then took over, announcing "This is the Annual Meeting of the Society, and we have some business to do." She told us that all the board members except Paula Tyler had agreed to serve again, although with some switching of roles. She asked that Secretary Reba Gillman read the slate, officially proposed by the nominating committee (Russell Gregory, Chair, Doug Glenn and Theresa Wilson). There was one open position - that of Publicity Vice President - and Libby asked for nominations from the floor. Theresa Wilson nominated Robert Mellin, who accepted the nomination. Lucy Meritt moved that the nominations be closed, and Russell Gregory seconded the motion, which passed. Bob Wall then moved that we accept this slate by acclamation. Donna Delvy seconded the motion, which passed. Libby asked if there were any other items anyone wanted to bring up. She then remarked that she was planning to interview Robert Mellin and to write an article about him for the Newsletter, continuing the idea of informing us about our members, as in her article about Lucy Shoe Meritt. Libby asked for ideas for future such articles. Bob Wall and Pearl Amster were two suggestions.

Libby then turned the program over to Robert, who had planned it. There followed one of those laid back, largely impromptu, and thoroughly delightful evenings, in which our members show that they are always willing to try a favorite song - usually but not always by Gilbert and Sullivan. Bill Hatcher sang the Captain's song "Fair Moon." Russell Gregory and Frank sang "Kind Captain, I've important information," and Loel Graber invited us to join in the choruses for "When I was a lad," all from *Pinafore*.

Frank sang "Once Upon a Time" by Lee Adams and Charles Krauss, who wrote such shows as *Annie*. Allen Lawshae called for choral audience participation as he sang "There lived a king" from *Gondoliers*, followed by "When Britain really ruled the waves" from *Iolanthe*. What a joy to have Allen back with us! Russell Gregory tickled our funny bones with a Texas version of "The Cherry Tree Carol." [We hope to be able to supply the words later.] Russell then sat down at the piano to accompany himself. Reversing the usual situation he asked Bob Wall to turn pages as he sang "Shadrach, Meshach, and Abednego."

After the laughter had died down Robert rose to announce that the Society is excited to have secured the services of Ralph MacPhail as Director for our June production of *The Mikado*. MacPhail teaches at Bridgewater College in Virginia, and is perhaps the world's greatest authority on Gilbert and Sullivan. Russell Gregory has volunteered to put MacPhail up during at least part of his stay in Austin (other volunteer hosts are welcome!). We are pleased to have received some offers of frequent flyer miles to help bring MacPhail to Austin - Many Thanks! But we need more donated miles to help defray the otherwise costly transportation. If any of you have frequent flyer miles you are willing to donate please let us hear from you! Call the G&S office, 472-4772, and leave a message.

When Robert called for more singing volunteers Lauren Hatcher responded. A student at Covington Middle School, Lauren chose to sing "I'm called little Buttercup" from *Pinafore*. Bravo, Lauren! We were then treated to the delightful trio from *The Mikado*, "I am so proud," with Russell singing Pooh-Bah, Allen singing Pish-Tush, and Frank singing Ko-Ko, using a score fortunately provided by Blair Protzman. We wound up the musical part of the evening with our traditional choral offerings, "Hail Poetry" from *Pirates*, with Allen singing the Pirate King's lead-in, and "Now to the banquet we press" from *The Sorcerer*. As we filed out copies of the Annual Treasurer's Report were available to anyone interested. As always an enjoyable social hour followed, enriched with tasty snacks brought by our members. Thank you again, Pearl, for so graciously opening your home to us.

THE MIKADO



"Willow, titwillow, titwillow!"

Message From Your President

Libby Weed

Many thanks to Russell Gregory, Theresa Wilson, and Doug Glenn, who served as a nominating committee and proposed a slate of officers for election at the annual meeting in January. One blank position remained when the names were placed before the membership, but a nomination from the floor completed the slate and brought Robert Mellin, our retired Executive Director, back onto the board.

The list of names is a rather familiar one - so familiar that instead of the usual introductions, I decided to dig up a little-known fact about each member of the executive committee. You may not be meeting new people, but you can at least learn something new about them.

Bill Hatcher has moved to the post of Executive Vice President, a position vacated by Paula Tyler. Bill was born in the Panama Canal Zone. An army brat, he grew up in many places, spending some of his school years in France.

Chris Buggé, a British native, is continuing in the position of Vice President for Production. Chris is a Rolls Royce aficionado. When he is not driving the vintage Rolls he bought and restored, you might find him on a motorcycle.

Robert Mellin was elected Vice President for Publicity, a position formerly filled by Edward Kluth. Robert's 11 years in the army reserves included completion of an NCO leadership training course. He rose to the rank of Sgt. 1st Class.

Reba Gillman continues, bless her, as Secretary and Newsletter Editor. Reba (literate, sophisticated, and polished as she is today) did not attend school until she was ten years old - and this in the days before home schooling was trendy.

Edward Kluth, now installed in Bill Hatcher's former post as Treasurer, seems to be a button-down computer and physics type. But he's really a "downtown, late night, Edward Hopper kind of guy" whose usual hours are noon to four am.

Larry Shepley remains in the position of Historian and Parliamentarian. During the recent holiday, he and other family members were treated to a tour of the National Zoo in Washington, D.C., personally conducted by the head of the zoo.

I will continue in the role of President, supported by the motley crew described above. During my college years I spent a summer as children's hostess at a Colorado guest lodge. While I was there, Mrs. Baird of the bread family taught me to knit.

Well, we may be some of the same old folks, but at least we came up with a little bit of new information! Thank you for your support and encouragement. We look forward to working with the Society again this year.

IMPROVED QUALITY VIDEO TAPES OF RECENT SOCIETY PRODUCTIONS

NOW FOR SALE

1995 <i>The Gondoliers</i>	\$20.00
1996 <i>The Pirates of Penzance</i>	\$20.00
1997 <i>The Yeomen of the Guard</i> (two tapes)	\$25.00

or all three for \$60.00

During the playing of the overture, names of members, sponsors, and contributors are scrolled and prominently displayed.

Call 472-4772

A MUST FOR YOUR G&S LIBRARY!

New or renewal membership form

Please check your membership level on the top of the mailing label. If you are in the "Development" category you will receive three complimentary newsletters. We encourage you to join our society. If you are a member, please check your membership renewal date on the top right corner of the mailing label. If expired or near expiration, your membership needs to be updated! To correct your address, renew your membership or become a member, complete this form and mail it to us at:

The Gilbert & Sullivan Society of Austin
2026 Guadalupe, #309
Austin, TX 78705 Phone: 472-4772

Name: (As you want it to appear) _____

Phone: (Day) _____

(Night) _____

Address: _____

City, State, ZIP: _____

What company do you work for? _____

Please Check One:

- ☐ Member \$10
- ☐ Patron \$25-\$49
- ☐ Lord High Patron \$50-\$99
- ☐ Grand Duke \$100-\$249
- ☐ Major General \$250-\$499
- ☐ Pooh-Bah \$500-\$999
- ☐ Savoyard \$1,000 and over
- ☐ I'm interested in becoming a business sponsor. Please call me.

THE GILBERT & SULLIVAN SOCIETY OF AUSTIN

MISSION:

SINCE 1976, WE HAVE BEEN DEDICATED TO
SPREADING THE JOYS OF GILBERT & SULLIVAN
THROUGH PERFORMANCES AND IN-SCHOOL PROGRAMS.

WHAT WE DO:

**Annual Grand Production
School Outreach concerts
Free monthly Musicales
Musical Scholarships
Monthly Newsletter
Holiday Season Show**

EXECUTIVE BOARD

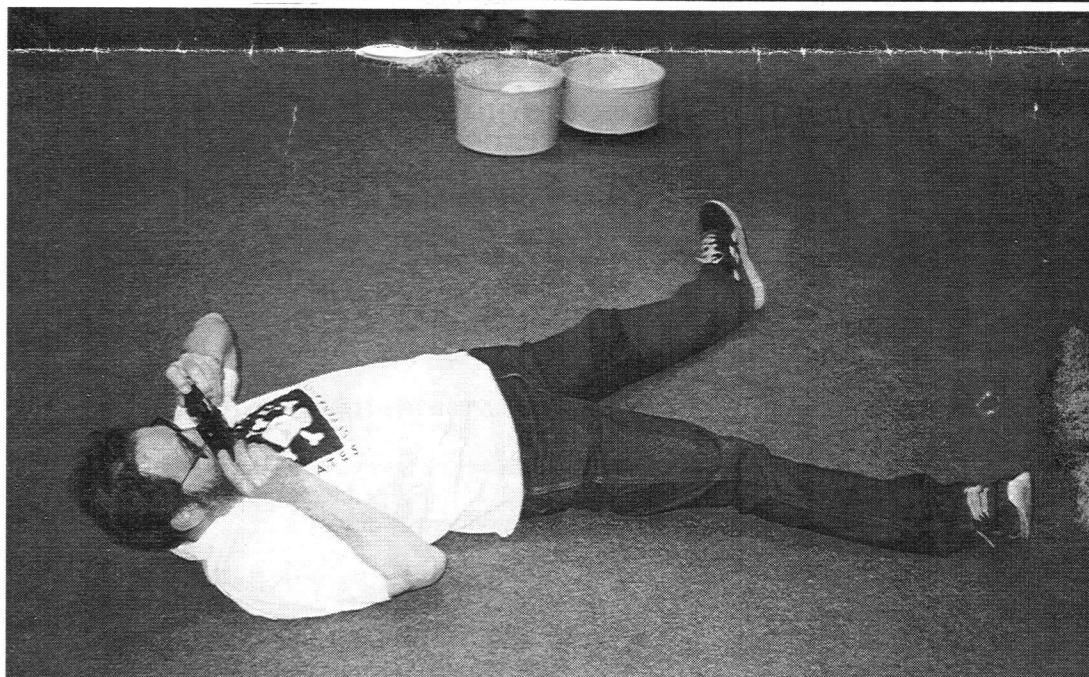
PRESIDENT	LIBBY WEED	837-5441
EXECUTIVE V.P.	BILL HATCHER	892-3722
PRODUCTION V.P.	CHRIS BUGGE	834-7766
PUBLICITY V.P.	ROBERT MELLIN	345-5950
SECRETARY	REBA GILLMAN	327-2277
TREASURER	EDWARD O. KLUTH	476-6209
HIST. & PARL.	LARRY SHEPLEY	327-1511

NEWSLETTER

EDITOR REBA GILLMAN

2026 GUADALUPE STREET
SUITE 309
AUSTIN, TX 78705
(512) 472-4772

[HTTP://MEMBERS.AOL.COM/MAHITABEL/CASAA/HOME.HTML](http://members.aol.com/MAHITABEL/CASAA/HOME.HTML)

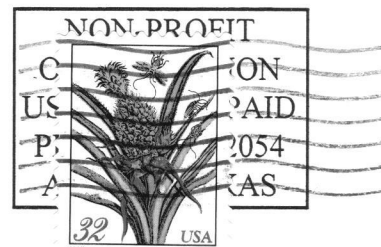


Robert Mellin
at a reheatsal
of *Pirates*
Spring 1996

Photo: Larry Shepley

THE
**GILBERT
&
SULLIVAN**
SOCIETY OF AUSTIN

RETURN SERVICE REQUESTED



2026 GUADALUPE STREET, SUITE 309 * AUSTIN, TEXAS 78705

The Gilbert & Sullivan Society of Austin

The Cherry Tree Story (Texas Style)

VerLynn Sprague

Harry Wayne, Copyright 1977

As sung by Russell Gregory on January 5, 1998

George Washington some people say,
Was born in old Virginia --
But if you believe that story,
Then the truth just isn't in ya.
I'd like to set the record straight
The truth should never vex us --
The father of his country
Was really born in Texas.

His father was a rancher
And as was long the practice --
He had a prize possession --
A very special cactus--
And once on George's birthday
Quite early in his life,
He made the boy a present --
A fine sharp bowie knife.

One day the rancher rode away,
As fathers sometimes do,
And George took out his bowie knife
And cut that plant in two.
Historians have searched for years
But no excuse is found.
Impulse had caused that boy
To cut that cactus to the ground.

The father came back to the ranch
And saw it where it lay --
He called young George before him
To see what he would say.
He said "Father, you have taught me
To keep my standards high,
I did it with my bowie knife,
I cannot tell a lie."

The father's face was clouded,
His eyes were filled with pain,
He knew they must leave Texas
And not return again,
For Texas is a pleasant place
In which to live or die --
But it's no place for any man,
Who cannot tell a lie.

2/98
CL
6/10