

## Reba Gillman, Editor

• Annual Meeting and Musicale •

A small but dedicated group gathered at Pearl Amster's on a wintry Monday, January 6th to conduct the Society's Annual Business Meeting and sing Gilbert and Sullivan. Members present were: Pearl, Allise Burris, Lucian Chimene, Reba Gillman, Loel Graber, Bill Hatcher, Edward Kluth, Robert Mellin, Gary Preuss, Lord High Pianist Bob Wall, Jess and Emma Walters, Libby Weed and Lord High Photographer Ernie Welch. Guests were Cynthia Hill and Amy Woodruff, our new Office Manager.

President Libby Weed presided over the business meeting. Allise Burris moved that we accept the slate of officers received from Enid Hallock and her Nominating Committee of Katharine Shields and Bee Polomé. Robert Mellin seconded the motion, which passed. Libby noted that three positions of Director-at-Large remained open to be appointed by the newly elected Executive Board. Treasurer Bill Hatcher passed out his year-end report, stating that not all figures were in for December, and the Gala Fund Raiser. These will be available next month. The Society showed a net profit for 1996 of \$4,500. Some concern was expressed that the Society had put money into conservative income accounts rather than even safer money market or asset management accounts.

Next item of business was consideration of revisions to the By-laws. Libby pointed out that the minimal proposed changes were suggested to preserve the original volunteer quality, with a little more flexibility, and to respect the will of the membership not to spend a lot of time on Society business. Concern was expressed that we had deleted the phrase authorizing disbursement of money to other 501(c)3 organizations. This concern was answered by pointing out that the phrase is still found in the Society's articles of incorporation. Another question concerned requiring two signatures for checks for over a certain amount. After discussion Allise Burris moved that checks for amounts of money over \$1500 must also be signed by the Treasurer. Bob Wall seconded the motion which passed. Reba Gillman moved that we accept the revisions to the By-laws. Emma Walters seconded the motion, which passed.

Finally the Executive Board announced that it had voted to give \$500 to the fund for the education of the Jaroschy children, and asked for the approval of the membership. Live Oak Theater has set up a 501(c)3 fund for this purpose. Questions were raised about the legality of such action. Robert said he would get a written legal opinion on the matter and consult further with Allise Burris, who is a lawyer. Robert introduced our guests, Amy Woodruff and Cynthia Hill. He also announced two pieces of good news. We had received \$500 from Amoco, and Richard Brown has agreed to be our Technical Director.

At last Libby turned the meeting over to Robert who had planned the musical program. Loel started us off with "When I was a lad" from *Pinafore*, with all joining in the chorus. Then Cynthia, one of our Mabels last summer, sang "Poor wandering one" from *Pirates* with a lusty chorus of male and female "maidens." Robert reported that he had won two tickets to ALO's *The Ballad of Baby Doe* (by Douglas Moore) by answering John Aielli's question on KUT, "In what opera is the leading man not a tenor?" Robert replied that if G&S counted it was *Strephon* in *Iolanthe*. Of course *Rigoletto* is also a better-known answer. Bill sang "Oh better far to live and die a Pirate King" from *Pirates* demonstrating that this rousing aria can also be sung by a light-voiced tenor, and not always a sturdy bass-voiced Russell Gregory. Cynthia sang Elsie's "'Tis done, I am a bride" from *Yeomen*.

Loel produced an interesting CD he had come across, *A Gilbert & Sullivan Festival* performed by the King's Singers, sometimes to accompaniment (not always recognizable Sullivan), and sometimes very effectively a capella. He played "Ah leave me not to pine alone" *Pirates*, and "Here's a how-de-do" from *The Mikado*. Gary Preuss sang "When all night long" from *Iolanthe*, remarking that with the legislature going into session he thought this appropriate ("When all night long a chap remains On sentry go, to chase monotony He exercises of his brains, That is, assumng that he's got any," followed in the second verse by "When in that House M P's divide, If they've a brain and cerebellum, too, They've got to leave that brain outside, And vote just as their leaders tell 'em to.")

Jess sang "The learned judge" from *Trial by Jury*. Jess told us he had received an invitation to the celebration of 50 Years of Covent Garden, and would leave on Friday to travel to London. He wondered how many of his old colleagues he would see. Bill sang the introduction to "Hail Poetry" from *Pirates*, and we all stood to sing our best. Then with "Now to the banquet we press" (*Sorcerer*), we flocked to delicious refreshments.

Note: Ernie Welch got a good shot of us all singing "Hail Poetry", which I print on page 4, with names. Some are mere heads poking out from behind someone else, but you get a feeling for what it's like to stand and deliver in Pearl's Soirée room. Only four people are not shown at all: Bob Wall (at the piano). Libby Weed, Amy Woodruff, and Ernie Welch, who was busy taking the picture..

Photographs by Ernie Welch  
Printing the Newsletter by LCRA  
Many Thanks!!!

• Wish List •

• The Gilbert & Sullivan Society •

The Gilbert & Sullivan Society of Austin is organized for educational purposes, including production of the G&S operas in the traditional manner. We produce one large show a year. Our monthly G&S musicales are free and open to all. Our monthly newsletter is sent to our many members and friends. We bring small, quality concert groups to the schools. Students from Adopt-a-Schools are invited guests at our large productions. We award musical scholarships.

**Executive Board**

President	Libby Weed	837-5441
Executive V.P.	Paula Tyler	459-4639
Production V.P.	Chris Buggé	834-7766 (w)
Publicity V.P.	Edward O. Kluth	476-6209
Secretary	Reba Gillman	327-2277
Treasurer	Bill Hatcher	892-3722
Hist. & Parl.	Larry Shepley	327-1511
Dir. at large	Robert Mellin	345-5950
Executive Director Robert Mellin		

**A Volunteer Costume Mistress**

To help organize costumes all year round; our small Concert Group performances need Victorian costumes

**Volunteer Office Workers**

Willing to work on 24 hours notice to help with the bulk mailing and other chores

**IBM Selectric Typewriter**

**Laser Printer**

**TV**

**VCR**

Call 472-4772

**Many Thanks**

to

**Richard Brown**

who has agreed to serve as our Technical Director.

Richard is the person responsible for cleaning up Capitol City Playhouse, making it pretty, and getting it ready for our December 8th Gala.

He is truly a magician!

**NOTICE: Date on mailing label indicates when your membership expires.**

If you are receiving the Newsletter on an introductory basis the date on the label indicates the last free Newsletter. We welcome contributions, upgrades, and dues from ALL our readers.

**If you like Gilbert and Sullivan, and want to support our efforts ... Join our society for a mere \$10.**

Members receive a monthly newsletter with information about G&S, our activities and our members.

Our monthly informal G&S musicales are open to the public at no charge.

→ Please use this form to join, to renew, or for change of address (and help us keep our mailing list up-to-date). ←

• Your tax-deductible contribution in any of the other categories are welcome and will help us mount our yearly productions and pay our monthly expenses •

- |  |  |   |
|--|--|---|
| <input type="radio"/> Savoyard \$1,000         | <input type="radio"/> Pooh-Bah \$500 - \$999                 | <input type="radio"/> Major General \$250 - \$499             |
| <input type="radio"/> Grand Duke \$100 - \$249 | <input type="radio"/> Lord High Patron \$50 - \$99           | <input type="radio"/> Patron \$25 - \$49                      |
| <input type="radio"/> Member \$10              | <input type="radio"/> I prefer to keep my identity anonymous | <input type="radio"/> I do not wish to receive the Newsletter |

Name \_\_\_\_\_ Phone \_\_\_\_\_

Address \_\_\_\_\_ Zip code \_\_\_\_\_

Do you work for a company that matches contributions? Company Name: \_\_\_\_\_

Make checks payable to **Gilbert & Sullivan Society of Austin** and mail with this form to:  
2026 Guadalupe Street, #309  
Austin, TX 78705



**The Hostess with the Mostest**  
Pearl in her kitchen

### MUSICALE at Pearl's

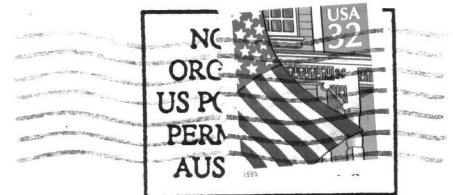
All join in --"Hail Poetry"

Robert Mellin's back, Gary Preuss, Reba Gillman,  
Lucian Chimene, Jess Walters, Bill Hatcher, Ed Kluth,  
Loel Graber, Emma Walters, Pearl Amster, Cynthia  
Hill, Allise Burris



*The*  
**& Gilbert**  
**SULLIVAN** *Society*  
OF AUSTIN

ADDRESS CORRECTION REQUESTED



Come to our Musicale  
Monday, February 3, 1997 At Pearl Amster's

2026 Guadalupe Street, Suite 309 • Austin, Texas 78705



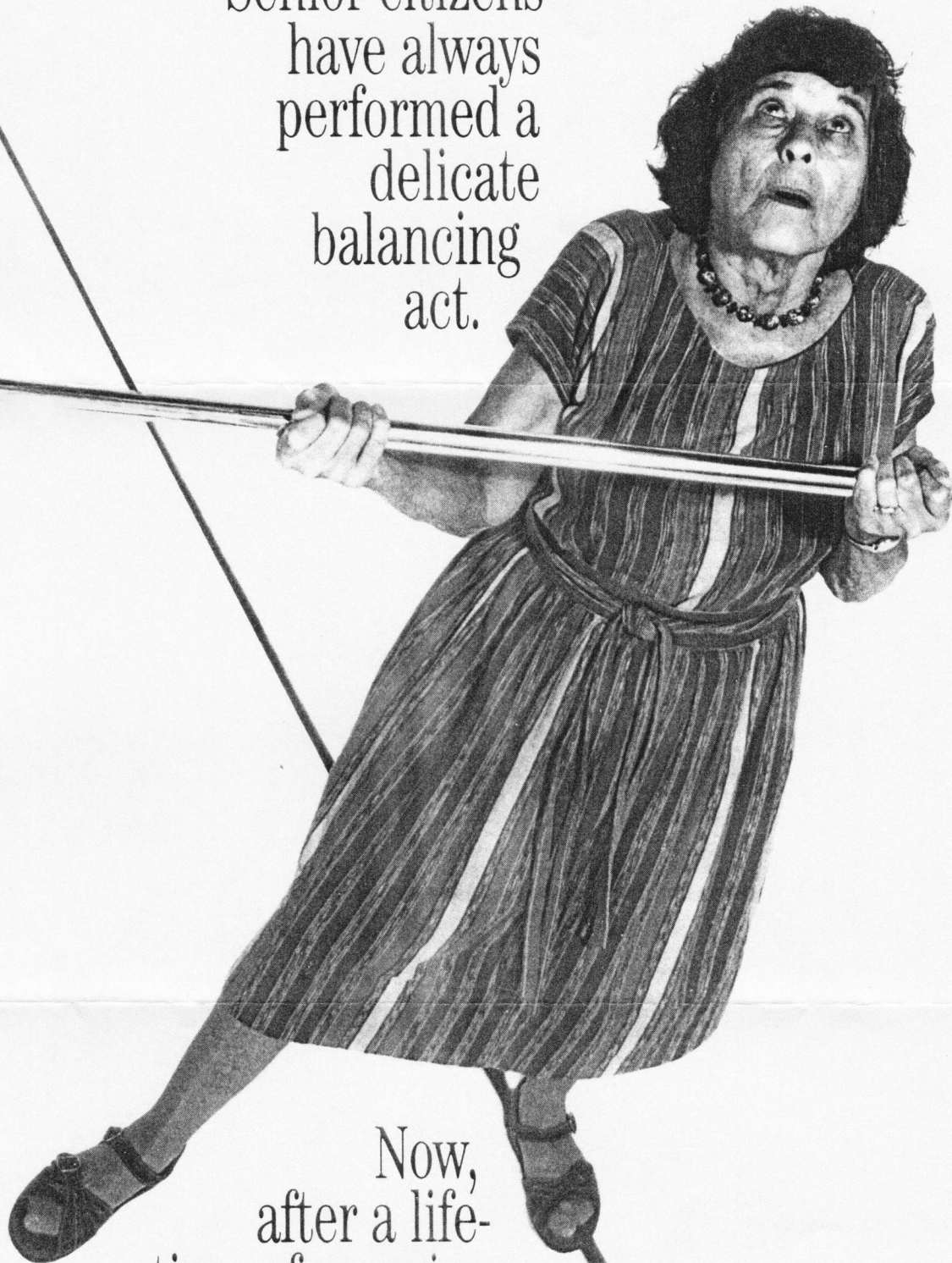
# SCIENCE NEWS

001 072598 16A S001883  
 UNIV OF TEXAS AUSTIN  
 LEONARD GILLMAN  
 RLM 8100 WITH DEPTMT  
 AUSTIN TX 78712

247



Senior citizens  
have always  
performed a  
delicate  
balancing  
act.



Now,  
after a life-  
time of promises,  
we can't just  
take away their  
safety net.

2/97  
C6  
6/10