

## The Gilbert & Sullivan Society of Austin

### June 1996 Newsletter

Reba Gillman, Editor

#### • Next Meeting -Our Monthly Musicale •

• **Monday June 3, 1996 at 7:30 pm** at Pearl Amster's, 2304 Hartford Road, 472-7028. Please bring munchies.

• **Come hear our own Jess Walters**, and enjoy who knows what other delights.

• **This is the last Musicale of the season.** See you again on **Monday September 9th.** Mark your calendars!

• **Friday June 21** will be the opening night **Gala Fund Raiser** performance of *The Pirates of Penzance*. We need a good turnout to start the show off right, and raise a little money.

## *The Pirates of Penzance*

June 21 - July 7, 1996

Temple Family Theater

Helm Fine Arts Center at St. Stephens School

• **For Members • reserve the best seats now •**  
Children 16 and under are half price at all shows.

Send your check, payable to The Box Office  
1110 Barton Springs Road  
Austin TX 78704

or for telephone orders  
Call 499-8497 and use your credit card.  
Please have Acct #, and expiration date ready.

**For the opening night show and Gala**  
**8 pm Friday June 21**

Tickets are \$25 for the show and party afterward  
or \$14 or \$10 for the show only

**For all other shows see Flyer insert**

#### • Message from your President •

Shortly before last year's performance of *Gondoliers*, then-President Robert Mellin asked me if I would help prepare the lobby of the Helm Fine Arts Center at St. Stephen's for our production. He plied me with posters from previous performances, photographs, and newspaper write-ups on *Pinafore*, *Iolanthe*, and *Mikado*. I had a grand time enlarging the clippings, mounting the photos, and arranging the posters around the lobby. While preparing the displays, I enjoyed watching the last few rehearsals and seeing the set come together and the performances become polished.

At the opening night and at succeeding performances, it was gratifying to see theatre-goers enjoying the displays and commenting on various aspects of our Society's offerings. It was also fun to sit with Reba Gillman and other volunteers, offering T-shirts, lexicons, post-cards, and other G&S memorabilia for sale. What a pleasure it is to see up close and in detail - and even to be a part of - all the hustle and bustle, worry and hurry that go into pulling a grand production together!

We have made much of the fact that we are a community organization. We are not a union of professionals, we are a society of people who love music and the theatre and who thrive upon the light operas of Gilbert and Sullivan. I would like to extend an invitation to others of you who care deeply for what we're about to join our volunteer network and be a part of the coming month's preparations for our production of *The Pirates of Penzance*.

I have agreed to help again with preparing the lobby for the June 21 opening. I need some others to help me, and we also need members who will help with the coordination of the gala buffet. We need members to sell cold drinks at our concession stand, and we need ushers. Would you be willing to join us? If so, please call Kimberlee or Robert at the Society office and leave your name and telephone number. You'll hear from us!

\*\*\*\*\* Libby Weed \*\*\*\*\*

Goodbye to **Megan Marsee**, who has served us very well in the office since November. Welcome to our new employee: **Kimberlee McKinlay**, a student at St. Edward's who sings in the chorus of our *Pirates*.

Gilbert & Sullivan Society Office • Phone: 472-4772

Our new employee Kimberlee McKinlay • Office Hours: Mon - Fri 1 - 5 pm  
Newman Hall, Room 309, 2026 Guadalupe St., Austin TX 78705

6/10

• **Last Meeting and Musicale** •

As recorded by Larry Shepley, and edited by Reba Gillman.

On **Monday May 6, 1996** at 7:30 pm 35 people gathered at Pearl's. Present were members Pearl Amster, Byron Arnason, Marilyn Babcock, Chris & Jean Buggé with baby Dominic, Sheila Glenn, Loel Graber, Janette Jones, Joyce & George Lloyd John, Chuck Kraus, Allen Lawshae, John Mast, Diana McAlpin, Robert Mellin, Lucy Shoe Meritt, Kay Novak, Joan Pearsall, Bee Harris Polomé, Larry Shepley, Lydia Storey, Paula Tyler, Lord High Pianist Bob Wall, Jess & Emma Walters, Tasha Waring & Sam Waring, Libby Weed, and Theresa Wilson. Guests were Moise Levy, Susan Lubin, Garret Maddox, Bob Nelson, Robert Spiegel, and Jamie Walker.

With Executive Director Robert Mellin presiding, and Lord High Pianist Bob Wall at the piano, the evening started off with bass Bob Nelson singing "Porgi Amor", the Countess's aria from act II of *The Marriage of Figaro* by Mozart. Bob remarked that it is traditional for certain male operatic roles to be sung by women (as Cherubino, in *The Marriage of Figaro*) but that the reverse is seldom heard. Susan Lubin, who sings in the Austin Lyric Opera chorus and tried out for Mabel in our *Pirates*, then took the stage to sing Josephine's tour de force "The hours creep on apace" from *Pinafore*. Next she sang Laetitia's aria from *Gianni Schicchi* by Puccini, and told us that the men's chorus from that opera is often heard on a TV commercial. She finished off with a lilting waltz from Strauss's *Die Fledermaus*.

Robert reported that we're deep into rehearsal of a wonderful production of *Pirates*. "Please come to Opening Night!" He then introduced our new member and Lord High Substitute Pianist Marilyn Babcock, who used to accompany the Oberlin G&S group. She played and Janette Jones and Garret Maddox sang the duet "Oh, false one, you have deceived me!" from *Pirates*. Janette then sang the dramatic "Alone and yet alive" from *The Mikado*, and Bob Nelson sang "When a felon's not engaged in his employment" from *Pirates*, with Marilyn continuing as accompanist.

Bob Wall then took back the piano, and Susan Lubin returned to sing "Bewitched, Bothered, and Bewildered" by Rodgers and Hart, followed by "Of thee I sing" by George Gershwin. Robert Mellin said "I was there on opening night!" [And who remembers when that was?]

Then back to G&S with Janette singing "When Frederic was a little lad" to explain how Frederic came to join the *Pirates*, after Frederic said he couldn't tell because "it would reflect upon my well-loved Ruth." (From *Pirates*, of course!)

Sheila Glenn then sang an original song with text from *A Midsummer's Night Dream* by Shakespeare. Sheila composed the music, a lullaby to put the Queen of Fairies to sleep, which was played on a synthesizer (here a boom box) by Sergio Gopnik of the Espirito Band.

Bob Nelson sang "For he is an Englishman" from *Pinafore*, and Robert explained that Chris Buggé was listening to it all, and would later give notes on the correct British pronunciation. The music ended with all joining in "Now to the banquet we press" (*Sorcerer*),

\* \* \* \* \*

Note from Secretary Reba Gillman: Many thanks to Larry Shepley who took these notes. I was late making my way back from Rochester, NY. I was sorry to miss the program but arrived just in time for the delicious refreshments.

• **Meeting of the Executive Board** •

Monday May 13, 1996 at 7 pm in the Society office. Megan Marsee has resigned as office manager; Robert Mellin is in charge of hiring a replacement. Robert is concerned because corporate funding for our production of *Pirates* is lagging, and so far we have only a few ticket reservations for opening night. Libby Weed offered to be in charge of volunteers to work in the lobby during the run of the show.

Several G&S In-school Concerts have already occurred, and more are scheduled. The Board voted to send Robert to the International G&S Festival in Philadelphia July 20 - 28. We will pay his air fare, registration, admissions, and other fees up to a total of about \$850. Next Board Meeting: Mon. June 10 1996.

• **Message from your Executive Director** •

You need not sing at our monthly Musicales. I have had the pleasure of encountering our Society members at different places around town. Most tell me that they are interested in our monthly informal musicales. But they think it's primarily for people who sing, and they say they do not sing. Permit me to clarify the situation. Most of the people who attend, in fact, do not sing. They simply enjoy hearing other people sing. I usually invite 3 to 6 performers to do the singing. It's a relaxed and fun environment. Sometimes one of the attendees might volunteer to do a number. Fine. And usually we do a popular choral number and all are welcome to join in. But most folks are content to simply enjoy hearing live music that they like in a relaxed atmosphere. The program is usually 30 to 45 minutes of music followed by a chance to talk with one another while savoring snacks provided by some thoughtful members. So please, do not hesitate, come to one of our informal musicales. You will like it.

\* \* \* \* \* Robert Mellin \* \* \* \* \*

Help us make our Opening Night Gala Fund Raiser a Big Success!

For only \$7 extra you get delicious food and a great party, meet the cast and support the Society.

Reserve your tickets now. Call The Box Office at 499-8497. Do it now!!!

• A Paradox •

The Pirate King intones:

For some ridiculous reason, to which,  
however, I have no desire to be dis-

-loyal, Some person in authority - I don't  
know who - very likely the Astronomer

Royal, Has decided that, although for such  
a beastly month as February, twenty-eight  
days as a rule are

plenty, One year in every four his  
days shall be reckoned as nine-and-

-twenty. Through some singular coinci-  
dence - I shouldn't be surprised if it were  
owing to the agency of an ill-natured

fairy - you are the victim of this clumsy  
arrangement, having been born in leap-  
year, on the twenty-ninth of Feb-

-ruary; And so, by a simple arith-  
metical process, you'll easily dis-

-cover That, tho' you've lived twenty-  
one years, yet, if we go by birthdays,  
you're only five and a little bit  
over!

It is this Paradox upon which the whole plot of *The Pirates of Penzance* depends. Here the Pirate King is explaining to Frederic that although he is 21 years old, he was indentured to the Pirates until his 21st birthday, and as Frederic tells Mabel "That birthday will not be reached by me until 1940!"

• Wish List •

**Needed: A volunteer Photographer** to take pictures at  
our various functions.

Laser Printer - 17 pages per minute

TV

VCR

Touch Tone Telephone

**Pick Up Truck or Van**

**Needed: Volunteers to help in the office:** People  
who can work a few hours now and then, on short notice.

Call 472-4772

♪♪ G&S In-school Concerts ♪♪

Our small group of G&S singers has recently per-  
formed for students at Johnston High School and Saint  
Theresa's School. Coming up soon are performances at  
Winn and Zavala Elementary Schools.



**NOTICE: Date on mailing label indicates when your membership expires.**

**If you are receiving the Newsletter on an introductory basis the date on the label indicates the last free Newsletter. We welcome contributions, upgrades, and dues from ALL our readers.**



**If you like Gilbert and Sullivan, and want to support our efforts ...**

**... you can do so by becoming a member of our society for a mere ten dollars.**

**Members receive a monthly newsletter with information about G&S, our activities and our members.**

**Our monthly informal G&S musicales are open to the public at no charge.**

**• Your tax-deductible contribution in any of the other categories are welcome and will help us mount our yearly productions and pay our monthly expenses •**

☐ Savoyard \$1,000

☐ Pooh-Bah \$500 - \$999

☐ Major General \$250 - \$499

☐ Grand Duke \$100 - \$249

☐ Lord High Patron \$50 - \$99

☐ Patron \$25 - \$49

☐ Member \$10

☐ I prefer to keep my identity anonymous

☐ I do not wish to receive the Newsletter

Name \_\_\_\_\_

Phone \_\_\_\_\_

Address \_\_\_\_\_ Zip code \_\_\_\_\_

Make checks payable to Gilbert & Sullivan Society of Austin and mail with this form to:  
2026 Guadalupe Street, #309  
Austin TX 78705

**Helm Fine Arts Center  
St. Stephen's School, 2900 Bunny Run**

**How to get there:**

From the north, go south on Loop 360. Turn right onto Cedar Street, the first traffic light after the bridge over Lake Austin.

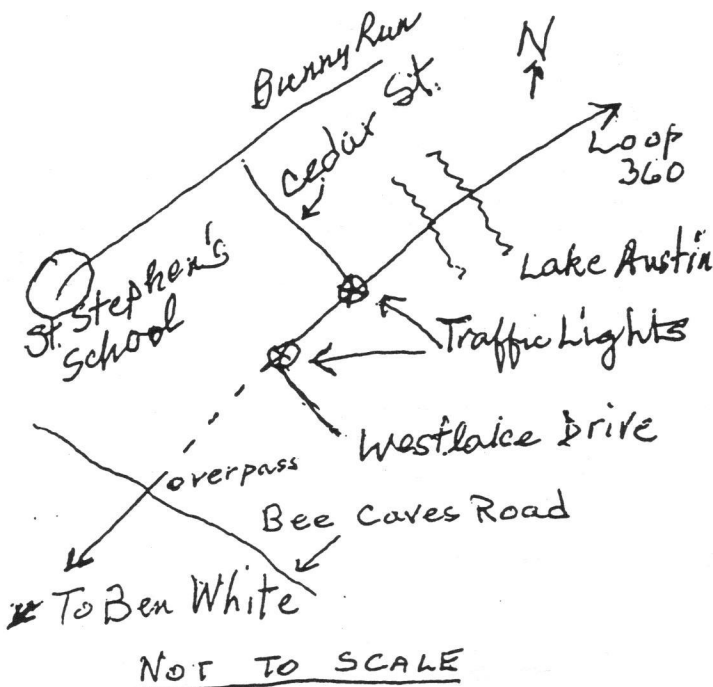
Turn left onto Bunny Run, which runs into the St. Stephen's campus.

From the south, go west on Ben White Blv'd, and north on its continuation, Loop 360. At the last traffic light before the bridge over Lake Austin, turn left onto Cedar St.

Notes: Cedar Street is not a cross street. Neither is Westlake Drive.

Loop 360 runs roughly north-south, curving down to go east and become Ben White Blv'd, which runs roughly east-west.

There are several ways to reach Loop 360 from north Austin. Rte 2222 is one way. Spicewood springs is another. Advice: If Loop 360 is unknown territory to you, look at an Austin map for orientation.



**Gondoliers Video Tape**

**Now Accepting Orders**

The tape is not available at this time due to technical difficulties. When the video tape becomes available we will notify those who have placed orders.

**• Urgent •**

**Volunteers Needed to help build scenery  
and to help sew costumes  
Call 472-4772**

**• News of Friends and Members •**

- Congratulations to member Mary Lu Barras, who will be ordained a Deacon on Sunday May 26, 1996 at St. Paul's on the Plains Episcopal Church in Lubbock, TX. It's been a long haul. We hope to see you back in Austin one day.
- Congratulations to our former office manager Megan Marsee, who has been awarded the UT President's Scholarship, for both the honor and the \$2,000 that accompanies it.

*The*  
**Gilbert SULLIVAN Society**  
OF AUSTIN  
ADDRESS CORRECTION REQUESTED

NON-PROFIT  
ORGANIZATION  
US POSTAGE PAID  
PERMIT NO. 2054  
AUSTIN, TEXAS

**Come to our Monthly Musicales  
Last one of this season  
7:30 pm, Monday, June 3, 1996 at Pearl's**



*Friends of G&S*

Attend the

**FUNDRAISER  
CHAMPAGNE BUFFET  
GALA WITH THE CAST**

on the Spacious Patio of the Helm Fine Arts Center

Following the Opening Nite Performance of

**The Pirates of Penzance**

Friday, June 21, 8:00pm



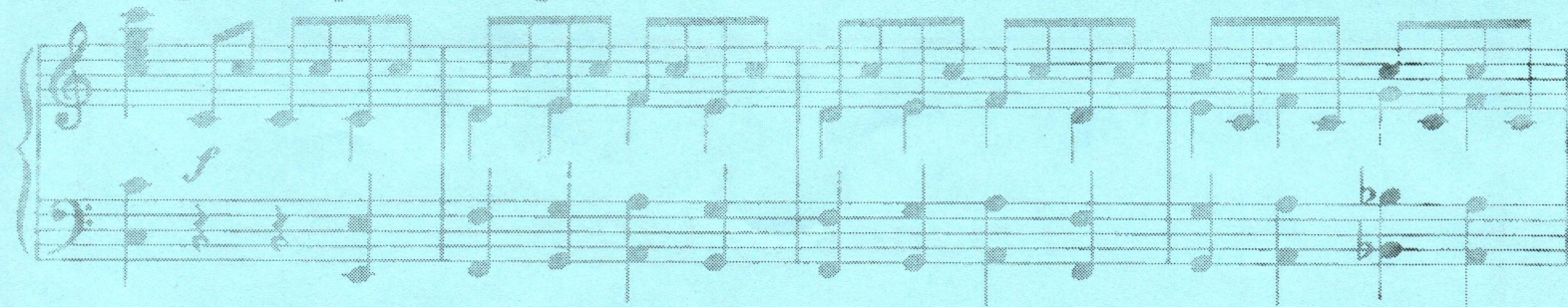
A pleasant and easy way to support the Gilbert & Sullivan Society in Austin. \$25.00 per person for everything (those 16 and under always at half-price). Only \$7.00 more than a regular price orchestra seat. Come, join us in celebrating our 20th Anniversary production.

*Please reserve by calling 409-TIXS (Wed-Sat) or 472-4772.*

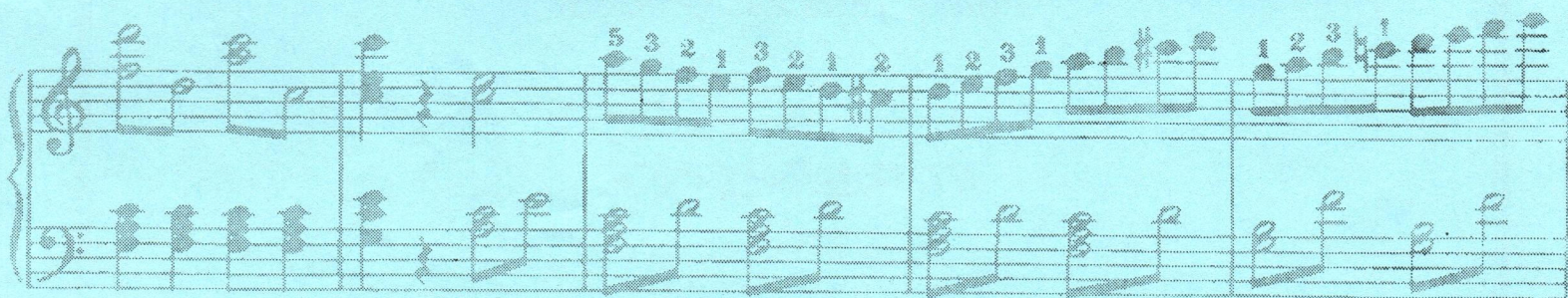
*Handwritten initials or mark.*



*da qui stringendo il tempo*



***ff* WE ALWAYS GET  
A STANDING OVATION.  
OF COURSE,  
WE CARRY SWORDS.**



*Più vivace*



The Gilbert & Sullivan Society of Austin  
presents The Pirates of Penzance. From June 21



to July 7, 1996, at the Helm Fine Arts Center,  
St. Stephen's School. For reservations, call 499-TIXS.